

## 2 Bed + 2 Bath

Internal Area 68-84 sqm

Balcony Area 6 sqm

## Units

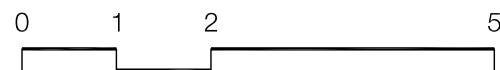
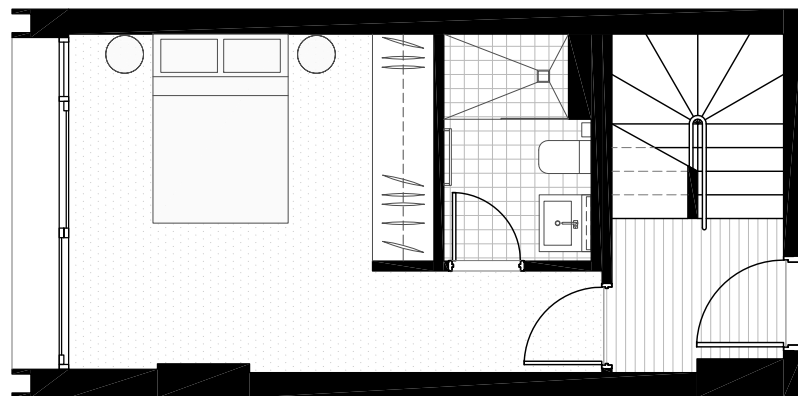
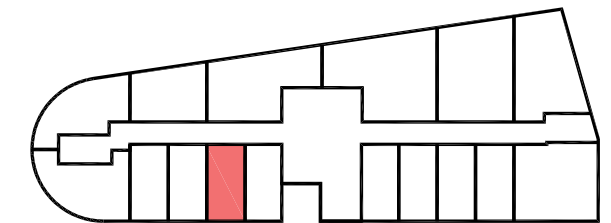
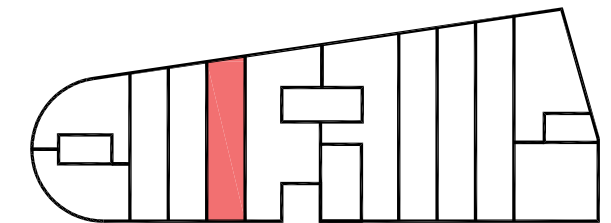
5.12, 5.13, 5.15

7.12, 7.13, 7.15

9.11, 9.12, 9.13

15.11, 15.12

17.11, 17.12



In accepting and utilising this document the recipient agrees that SJB Architecture (NSW) Pty. Ltd. ACN 081 094 724 T/A SJB Architects, retain all common law, statutory law and other rights including copyright and intellectual property rights. The recipient agrees not to use this document for any purpose other than its intended use; to waive all claims against SJB Architects resulting from unauthorised changes; or to reuse the document on other projects without the prior written consent of SJB Architects. Under no circumstances shall transfer of this document be deemed a sale. SJB Architects makes no warranties of fitness for any purpose. The Builder/Contractor shall verify job dimensions prior to any work commencing. Use figured dimensions only. Do not scale drawing.



Nominated Architects Adam Haddow 7188 John Pradel 7004

Rev. No.	Date	Revision	By	Chk.
0	-	30.09.15	JT	JP
1	-	06.10.15	JT	JP
2	-	15.10.15	JL	JP
3	-	20.09.16	JT	GLG

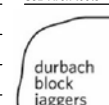
Rev. No.	Date	Revision	By	Chk.

The Crest, 111 - 139 Darlinghurst Rd  
Potts Point

Marketing Floor Plan  
Apartment Type 20

Date	Scale	Sheet Size
20.09.16	nts	@ A3
Reg. No.	Drawn	Chk.
-	JT	JP
Job No.	Drawing No.	Revision
<b>5324</b>	<b>AI-4420</b>	<b>3</b>

SJB Architects



Level 2  
490 Crown Street  
Surry Hills NSW  
2010 Australia  
T 61 2 9380 9911  
F 61 2 9380 9922  
www.sjb.com.au