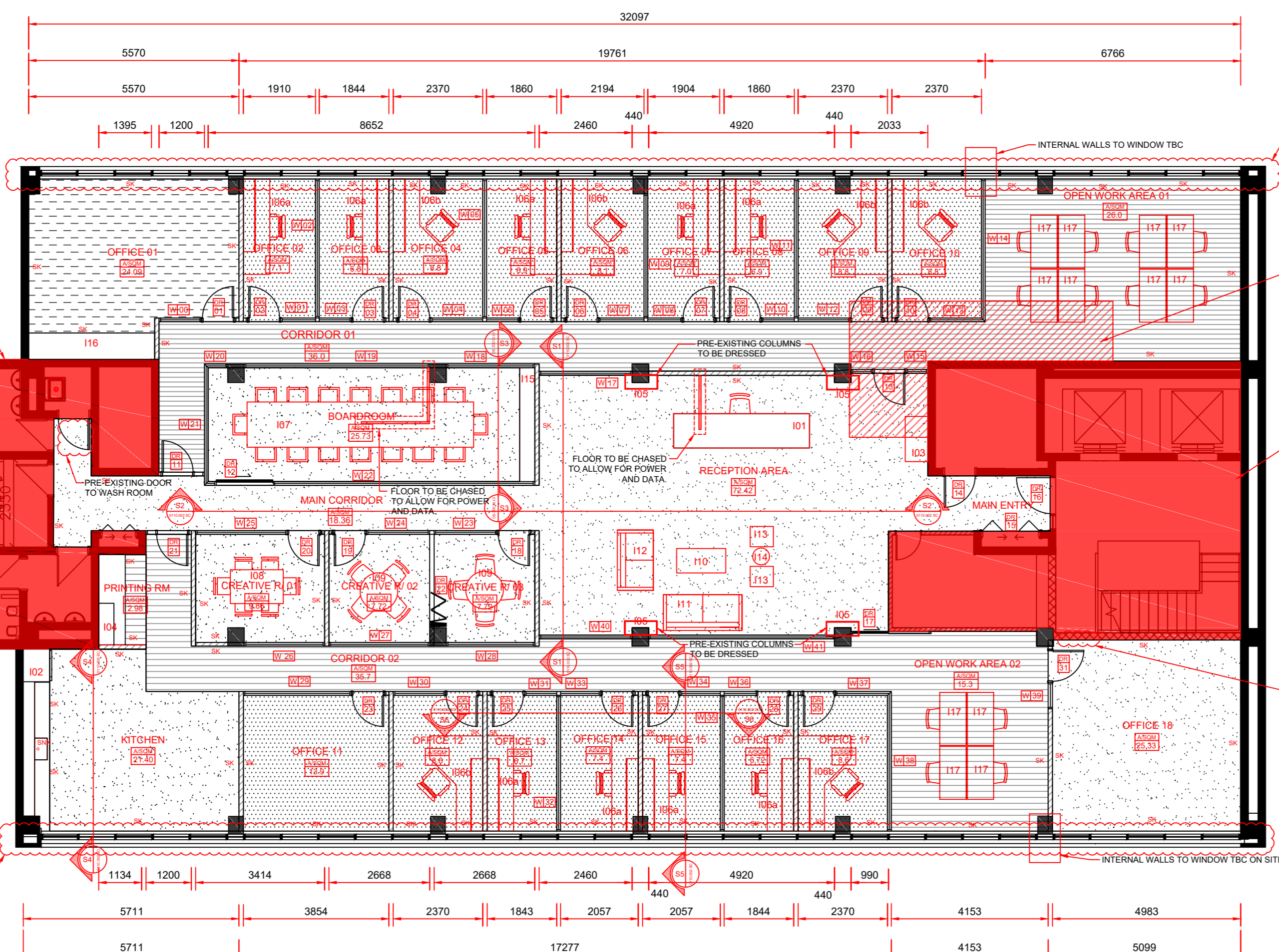


GENERAL SITE CONTACTS				
Person	Company	Position	Contact Number	Email Address
Dennis He	Praxis Capital	Building Manager	02 8837 6444	support@praxiscapital.com.au
Allan Dias	AI & Co Haus of Design	Lead Architect/Designer	0432 804 691	creative@alancohausofdesign.com

TOTAL FLOOR AREAS				
Flooring Type	Vinyl	Carpet Tiles	Concrete	Carpet
Total Area /SqM	112.97	128.52	191.54	24.90



DUE TO PRE-EXISTING EXTERNAL WINDOW ARRANGEMENT, INTERNAL WALL POSITIONS TO BE DETERMINED AND FINALISED ON SITE.

BULK HEAD TO COVER A/C SYSTEM, FINISHED CEILING LEVEL TBC

PRE-EXISTING ROOM AND FOYER AREA.

PRE-EXISTING DOOR TO BE REMOVED - TBC

A/C	AIR CONDITIONER	OV	OVERFLOW
ACT	ACOUSTIC CEILING TILES	P	PAINT PAINTED
AHD	AUSTRALIAN HEIGHT DATUM	P/PWBK	PAVING BRICK
AL	ALUMINIUM	PWC	PAVING CONCRETE
AP	ACCESS PANEL	PBD	PLASTERBOARD
AW	ALUMINIUM WINDOW	PBD/FR	PBD-FIRE RATED
BAL	BALUSTRADE	PC	PRECAST CONCRETE
BHD	BULKHEAD	PCF	PARALLEL FLANGE CHANNEL
BIT	BITUMEN	PLY	PLYWOOD
BKC	BRICKWORK- COMMON	PMZ	PREFINISHED METAL CLADDING
BKF	BRICKWORK- FACE	PTH	PAPER TOWEL HOLDER
BL	BLOCKWORK CONCRETE	PU	POLYURETHANE
BOL	BOLLARD	RC	REINFORCED CONCRETE
BSN	BASIN	RC/NS RC	RC-NON-SLIP
CBG	CORBARD	RC/HF RC	RC-HIGH FINISH
CFC	COMPRESSED FIBRE CEMENT	RCBR	RC-BROOM FINISH
CJ	CONSTRUCTION JOINT	RCOF	RC-OFF FORM
COS	CONFIRM ON SITE	RCSC	RC-SCREED
/CR	CEMENT RENDER	RH	ROBE HOOK
CS	GASTER	RHS	RECTANGULAR HOLLOW SECTION
CV	COVERED	RL	REDUCED LEVEL
D	DOOR	RS	ROLLER SHUTTER
DP	DOWNPIPE	RWO	RAIN WATER OUTLET
DPC	DAMP PROOF COURSE	RWS	RAIN WATER SUMP
E	EXISTING	SB	SPLASHBACK
EDB	ELECTRICAL DISTRIBUTIONBOARD	SC	STEEL COLUMN
EF	EXHAUST FAN	SH	SHELF
EJ	EXPANSION JOINT	SHR	SHOWER
EQ	EQUAL	SHS	SQUARE HOLLOW SECTION
F	FIXED	SIM	SIMILAR
FC1	FIBRE CEMENT BEIGE	SK	SKIRTING
FC2	FIBRE CEMENT LIGHT GREY	SNK	SINK
FC3	FIBRE CEMENT DARK GREY	SPL	SET PLASTER
FCL	FINISHED CEILING LEVEL	SS	STAINLESS STEEL
FD	FIRE DOOR	SSL	STRUCTURAL SLAB LEVEL
FFL	FINISHED FLOOR LEVEL	STR	STEEL TROWEL FINISH
FG	FIXED GLASS	SWP	STORMWATER PIT
FH	FIRE HYDRANT	T	TIMBER
FHR	FIRE HOSE REEL	TBC	TO BE CONFIRMED
FIP	FIRE INDICATOR PANEL	TD	TIMBER DOOR
FR	FIRE RATED	TF	TILE-FLOOR
FRL	FIRE RESISTANCE LEVEL	TLW	TILE-WALL
FW	FLOOR WASTE	TME	TIME TO MATCH EXISTING
G	GLASS	TOP	TOPPING
G/OB	GLASS/OBSCURE	TOW	TOP OF WALL
GAL	GALVANISED	TP	TAP
GBR	GRAB RAIL	TRH	TOILET ROLL HOLDER
GD	GLAZED DOOR	TR	TOWEL RAIL
GPO	GENERAL POWER OUTLET	TYP	TYPICAL
HD	HAND DRYER	TZ	TERRAZZO
HRL	HANDRAIL	UIS	UNDERSIDE
HWW	HOT WATER UNIT	UB	UNIVERSAL BEAM
JN	JOINERY (ITEM)	UC	UNIVERSAL COLUMN
KP	KICK PLATE	UNO	UNLESS NOTIFIED OTHERWISE
L	LAMINATE FINISH	UR	URNAL
LS	LOUVRE SCREEN	V	VINYL
M	MIRROR	V/S	VINYL-SHEETING
MDF	MEDIUM DENSITY FIBREBOARD	V/S	VERIFY ON SITE
MLF	METAL LOUVRE- FIXED	VP	VENT PIPE
MR	MOISTURE RESISTANT	W	WINDOW
MRS	METAL ROOF SHEETING	WC	WATER CLOSET
MS	MILD STEEL	WD	WASTE DISPOSAL
MSF	METAL SCREEN-FIXED	WP	WEATHERPROOF
MWS	METAL WALL SHEETING	WPM	WATERPROOF MEMBRANE
(N)	NEW	WR	WATER RESISTANT
NC	NOT IN CONTRACT	WW	WALL VENT

Room / Space	Area /SqM	Flooring Type / Finish	DWG No / Sch No
Office 01	24.09	Carpet. Please refer to material / furniture schedule number.	0113.001MS
Office 02	7.10	Carpet Tiles. Please refer to material / furniture schedule number.	0113.001MS
Office 03	6.80	Carpet Tiles. Please refer to material / furniture schedule number.	0113.001MS
Office 04	8.80	Carpet Tiles. Please refer to material / furniture schedule number.	0113.001MS
Office 05	6.90	Carpet Tiles. Please refer to material / furniture schedule number.	0113.001MS
Office 06	8.10	Carpet Tiles. Please refer to material / furniture schedule number.	0113.001MS
Open Work Area 01	26.00	Laminate. Please refer to material / furniture schedule number.	0113.001MS
Office 07	7.00	Carpet Tiles. Please refer to material / furniture schedule number.	0113.001MS
Office 08	6.90	Carpet Tiles. Please refer to material / furniture schedule number.	0113.001MS
Office 09	8.80	Carpet Tiles. Please refer to material / furniture schedule number.	0113.001MS
Office 10	8.80	Carpet Tiles. Please refer to material / furniture schedule number.	0113.001MS
Corridor 01	36.00	Laminate. Please refer to material / furniture schedule number.	0113.001MS
Boardroom	25.73	Concrete Finish. Please refer to material / furniture schedule number.	0113.001MS
Main Corridor	18.36	Concrete Finish. Please refer to material / furniture schedule number.	0113.001MS
Reception Area	72.42	Concrete Finish. Please refer to material / furniture schedule number.	0113.001MS
Creative Room 01	9.86	Concrete Finish. Please refer to material / furniture schedule number.	0113.001MS
Creative Room 02	7.72	Concrete Finish. Please refer to material / furniture schedule number.	0113.001MS
Creative Room 03	7.72	Concrete Finish. Please refer to material / furniture schedule number.	0113.001MS
Corridor 02	35.7	Laminate. Please refer to material / furniture schedule number.	0113.001MS
Printing Room	2.98	Laminate. Please refer to material / furniture schedule number.	0113.001MS
Kitchen	21.40	Concrete Finish. Please refer to material / furniture schedule number.	0113.001MS
Office 11	13.90	Carpet Tiles. Please refer to material / furniture schedule number.	0113.001MS
Office 12	8.6	Carpet Tiles. Please refer to material / furniture schedule number.	0113.001MS
Office 13	6.7	Carpet Tiles. Please refer to material / furniture schedule number.	0113.001MS
Office 14	7.4	Carpet Tiles. Please refer to material / furniture schedule number.	0113.001MS
Open Work Area 02	15.30	Laminate. Please refer to material / furniture schedule number.	0113.001MS
Office 15	7.40	Carpet Tiles. Please refer to material / furniture schedule number.	0113.001MS
Office 16	6.72	Carpet Tiles. Please refer to material / furniture schedule number.	0113.001MS
Office 17	8.60	Carpet Tiles. Please refer to material / furniture schedule number.	0113.001MS
Office 18	25.33	Concrete Finish. Please refer to material / furniture schedule number.	0113.001MS

Plan Name	Issue	DWG No / Sch No
Cover Page	3	0111.000 CP
Floor Plan	3	0110.001 FP
Sections	3	0110.002 SC
Ceiling Layout w/ A/C	3	0112.006 FCL
Electrical Plan	3	0112.005 EL
Joinery	1	0112.002 JN
Custom Items	1	0114.001 CC
Reception Columns	1	0114.001 CC
Window & Door Schedule	2	0210.001 WD
Painting / Colour Finishes	1	0126.001 PP
Material Schedule	1	0113.001 MS
Furniture Schedule	1	0115.001 FS
Electrical Schedule	1	0120.001 EL

PLEASE NOTE

- Due to the age of the building, slab type could be post tensioned. Prior to any chasing into slab, slab type must be confirmed.
- Skirting (SC) to be applied 100mm high throughout the fit-out floor on all physical walls excluding aluminum extrusions
- All Electrical works to be carried out by a certified licensed electrician.
- All exposed cables and wires to be neat and black in colour.
- All details of windows and doors such as size, qty etc to be used, have been supplied within the window and door schedules under numbers 0210.001WD
- Exposed ceiling areas from 2.7m to 3.3m must have a base coat of multi-seal and finished in two to three coats of Matt Black Interior Paint. Please refer to ceiling plan 0310.001CP for allocated exposed areas.
- Toilet areas to be refurbished / refreshed, finishes and materials to be confirmed.
- Concrete finished areas to be confirmed onsite, once samples are completed.
- Ceiling / Wall heights and finishes have been supplied in section plan and material schedules.
- All finishes to be confirmed by New South Lawyers prior to start or ordering dates.

PLEASE NOTE - All Required items such as Building specifications, Statement of Environmental Effects, Energy Certificate, Erosion & Sediment Control, Drainage / Storm water etc. Have not been supplied due to approval on existing space & building usage. The works that are going to be carried out are minimal with no structural change to the interior. The purpose of the space is to stay as is, if additional documentation is required for the above mentioned requirements, please refer to previous approved documents on file. If more information is required please contact the designer AI & Co Haus of Design on 02 9517 9143 or via email to creative@alancohausofdesign.com

Item No	Item Name	Qty	Item Description	DWG No / Sch No
101	Reception Desk	1	Desk to be finished in gold finish with storage draws - 3.6m (L) x 1.0m (W) x 0.9m (H)	0112.002JN
102	Kitchen Cupboards	1	Kitchen to have lower and overhead cupboards & storage. Please refer to DWG for detail.	0112.002JN
103	Coffee / Client service table	1	Please refer to DWG for detail.	0112.002JN
104	Printer Room Cupboards	1	Printer room to have lower and overhead cupboards & storage. Please refer to DWG for detail.	0112.002JN
105	Lower Column Covers	4	Lower columns to be dressed and covered. Please refer to DWG for detail.	0114.001CC
106a	Office Desk	9	Custom desk with over head storage cupboards. Please refer to DWG for detail.	0112.002JN
106b	Office Desk	6	Custom desk with over head storage cupboards. Please refer to DWG for detail.	0112.002JN
107	Boardroom Table	1	Boardroom Table with GPO and connection points, must seat min of 16 - 6.0m (L) x 1.2m (W).	0115.001FS
108	Creative Rm Table 1	1	Creative Rm 1 table to seat a min of 6. Please refer to material / furniture schedule number.	0115.001FS
109	Creative Rm Table 2 & 3	1	Creative Rm 2 & 3 table to seat a min of 4. Please refer to material / furniture schedule number.	0115.001FS
110	Coffee Table	1	Please refer to material / furniture schedule number.	0115.001FS
111	Sofa / Lounge	1	Sofa / Lounge to seat a min of 3. Please refer to material / furniture schedule number.	0115.001FS
112	Sofa / Lounge	1	Sofa / Lounge to seat a min of 2. Please refer to material / furniture schedule number.	0115.001FS
113	Armchair	2	Single seat armchair. Please refer to material / furniture schedule number.	0115.001FS
114	Side Table	1	Please refer to material / furniture schedule number.	0115.001FS
115	Boardroom Storage	1	Presentation wall to have allocation for projection and storage. Please refer to DWG for detail.	0112.002JN
116	Office 01 Cupboards	1	Office 01 to have storage and desk. Please refer to material / furniture schedule number.	0112.002JN
117	Work Stations / desks	12	Each Work station to be partitioned with allowed under storage. 1.4m (L) x 0.7m (W).	0115.001FS

AI&Co
 www.alancohausofdesign.com
 ABN: 78498749057
 LL - (02) 9517 9143
 EA - creative@alancohausofdesign.com

Follow us on

ISSUE	DATE	ISSUE DESCRIPTION	BY	CHECK
3	26-01-2017	FLOOR PLAN - REVISED ROOM AND FLOOR LAYOUT	AD	/
2	17-01-2017	FLOOR PLAN - REVISED ROOM AND FLOOR LAYOUT	AD	/
1	08-01-2017	DRAFT FLOOR PLAN	AD	/

DRAWING ISSUE		WALL LEGEND	
	PRE-EXISTING STRUCTURAL COLUMNS		GYPSUM WALL, 15MM STRATO-STUD, PLATE AND NOGGIN WITH 15MM THICK ACOUSTIC GRADE GYPSUM
	PRE-EXISTING STRUCTURAL WALLING		SAPPHIRE MAXLINE ALUMINIUM FRAME AND GLASS PARTITIONS

Floor Plan

PROJECT ADDRESS
Lvl 6 / 20 Macquarie St, Parramatta NSW 2150

CLIENT
New South Lawyers

DRAWN BY
Allan Patrick Dias

DATE
08-01-2017

SCALE
1:100

SHEET NUMBER
00125

DRAWING NUMBER
0110.001 FP

ISSUE
3

NORTH POINT

A2